



Inmetro Injury Surveillance System (Sinmac)

2015

Sinmac is a system that records all kinds of consumer product-related injuries or incidents reported by consumers and other sources and its objective is to define preventive or corrective actions to mitigate risks and to reduce the number of consumer accidents in Brazil.

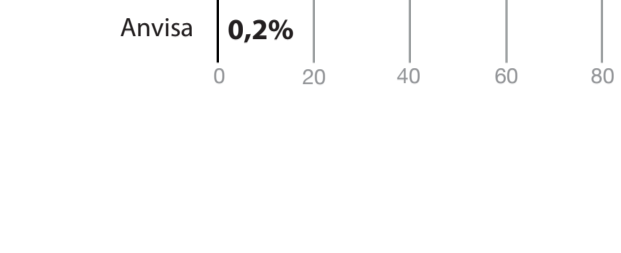
Your participation is essential. Notify your injury or incident. With your notification we will encourage decision-making by public, private and third sector, for the reduction and the prevention of consumer accidents in Brazil.

Rate of rejection



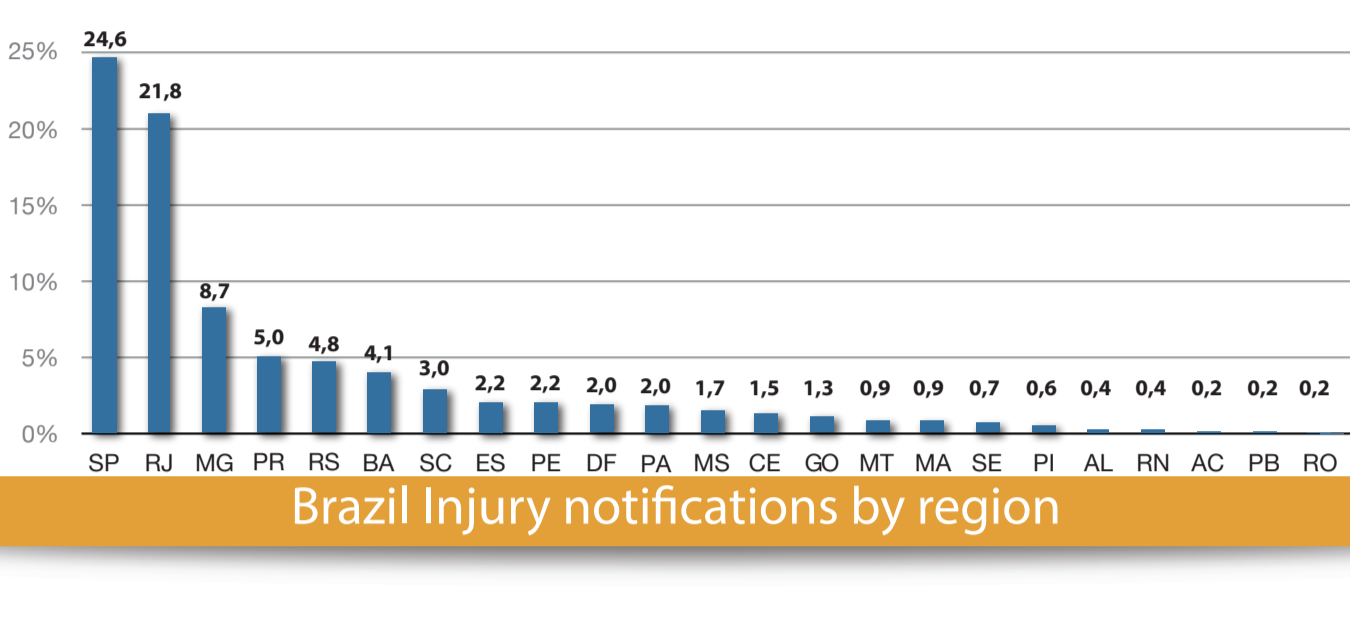
The rate of rejection corresponds to the number of reports that is not classified as a consumer accident by Inmetro. In 2015, 11% of the consumers' reports were not classified as a consumer accident.

Where do the reports come from?

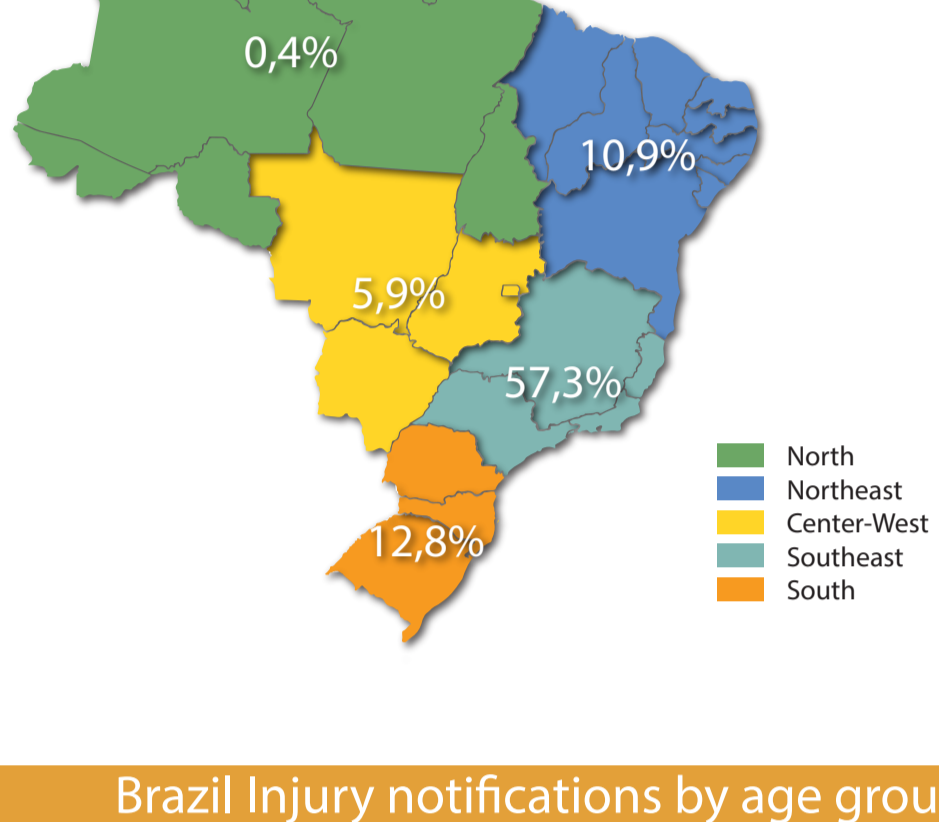


The graphic on the left shows that Sinmac has received notifications from different inputs, foreseen since its conception in 2006. Sinmac became, in fact, a "national system", as it receives information from different sources.

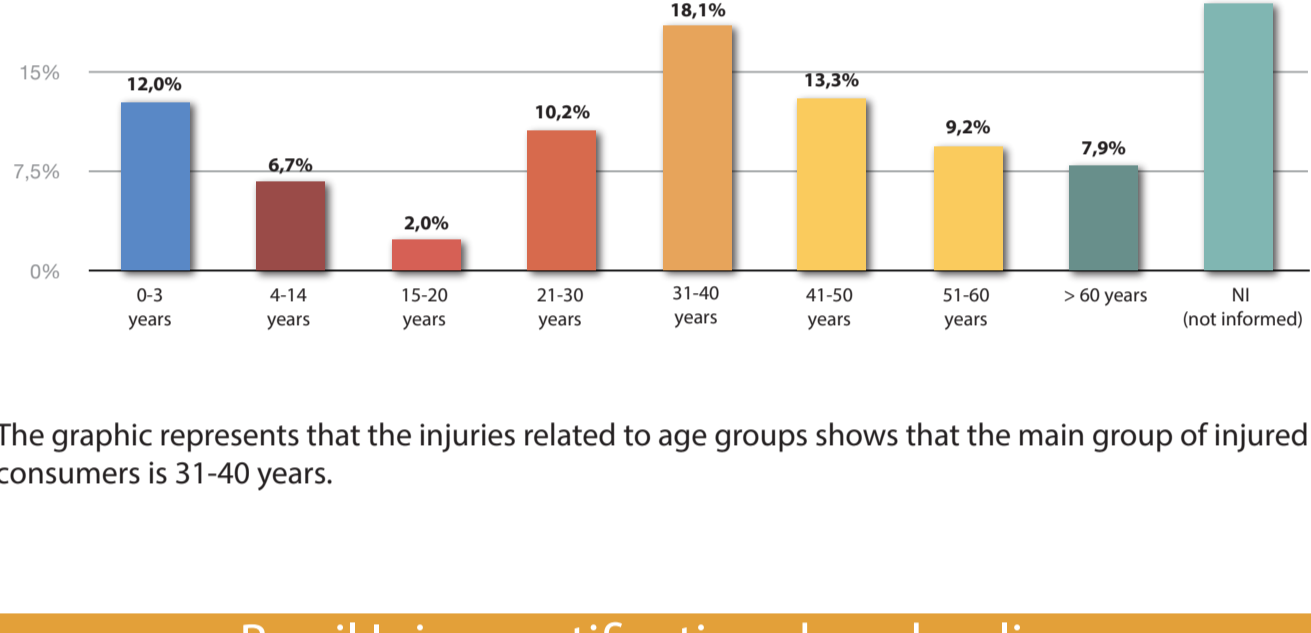
Brazil Injury notifications by state



Brazil Injury notifications by region

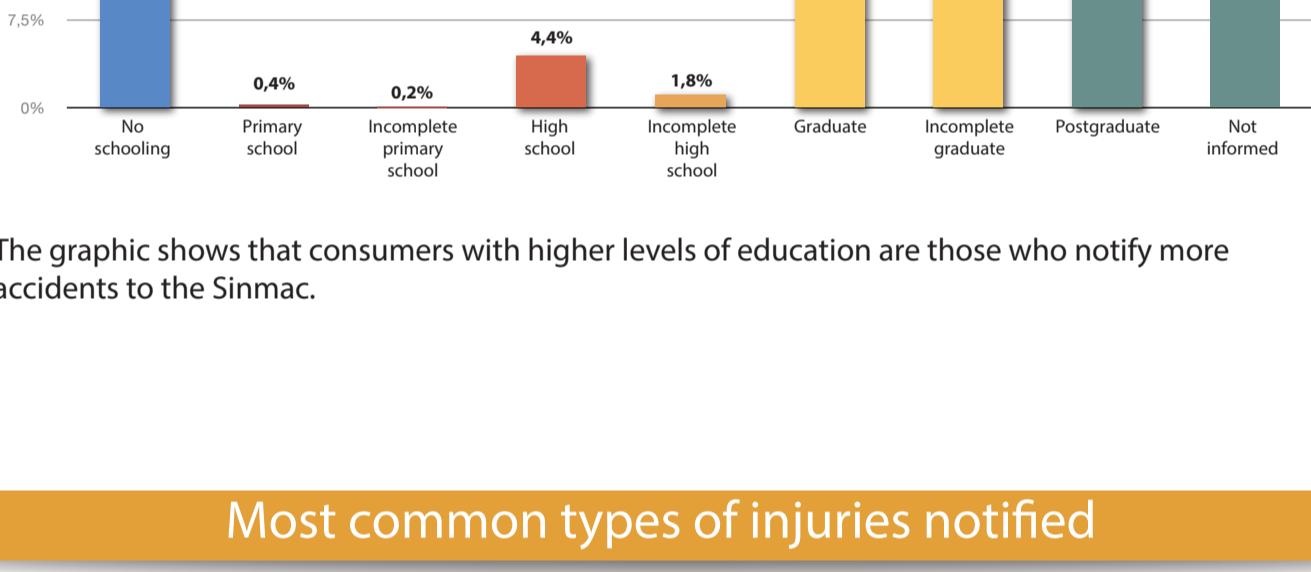


Brazil Injury notifications by age group



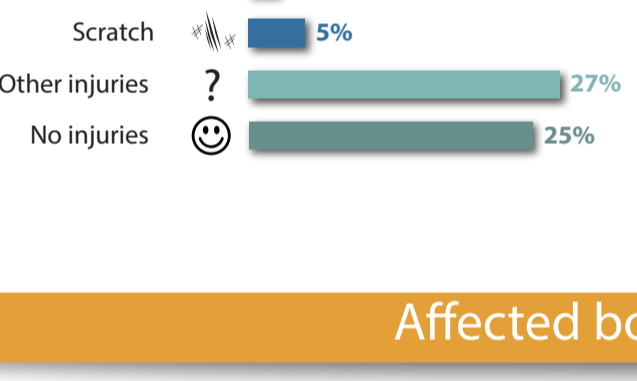
The graphic represents that the injuries related to age groups shows that the main group of injured consumers is 31-40 years.

Brazil Injury notifications by schooling



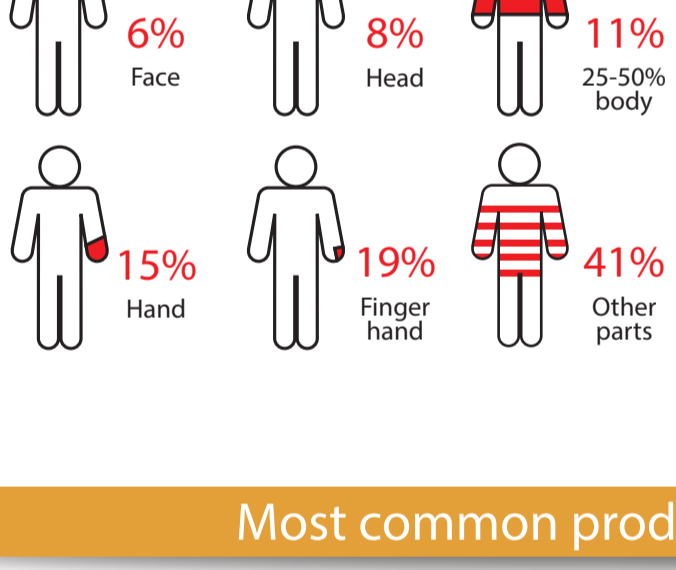
The graphic shows that consumers with higher levels of education are those who notify more accidents to the Sinmac.

Most common types of injuries notified



The most common injuries notified to the Sinmac are cut, burn, scratch and allergy. It should be noted that in 25% of the cases there were no injuries. Even when the incident didn't cause an injury it must be reported to Inmetro using Sinmac.

Affected body parts

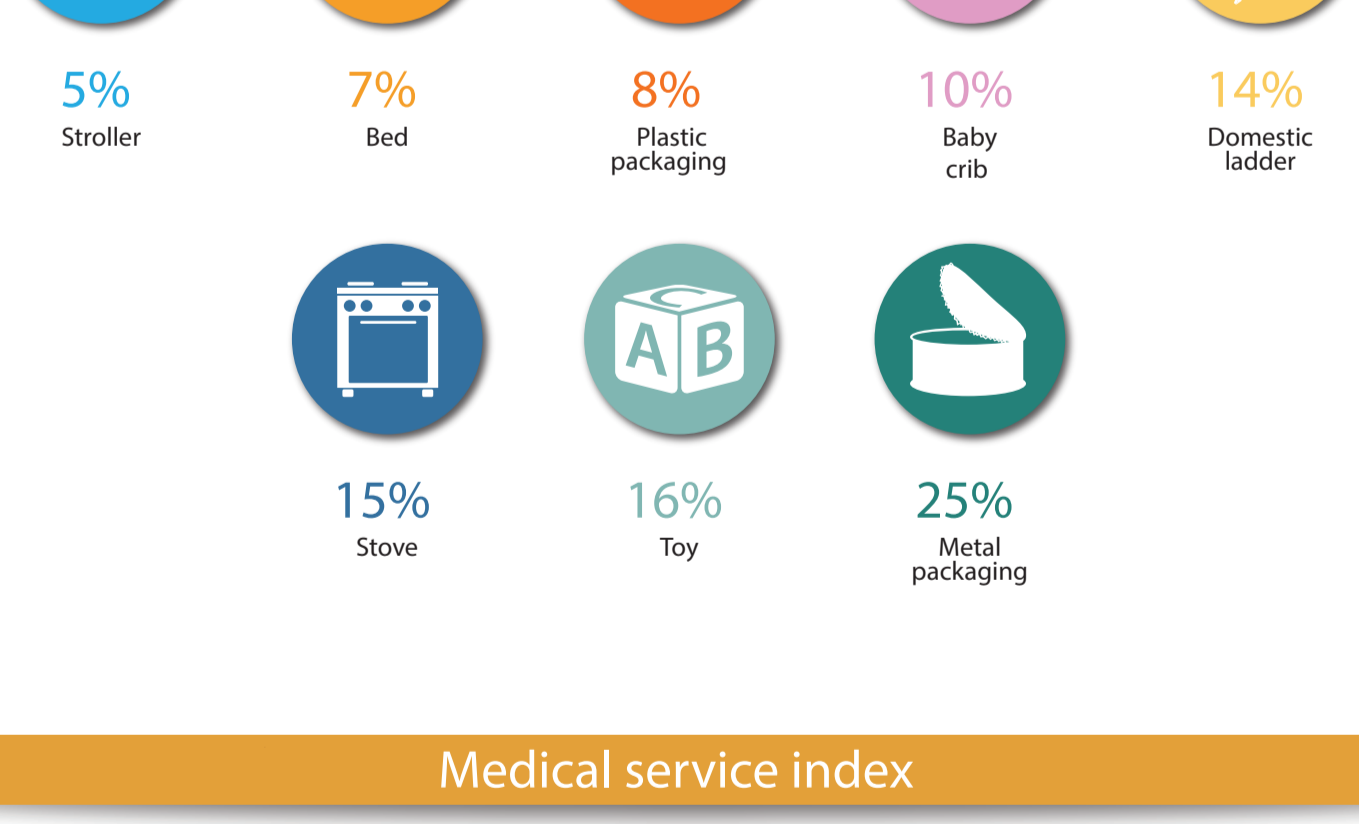


The most affected parts of the body were finger hand (19%) and hand (15%), this major incidence of injuries with hands is directly related to the product family "packaging".

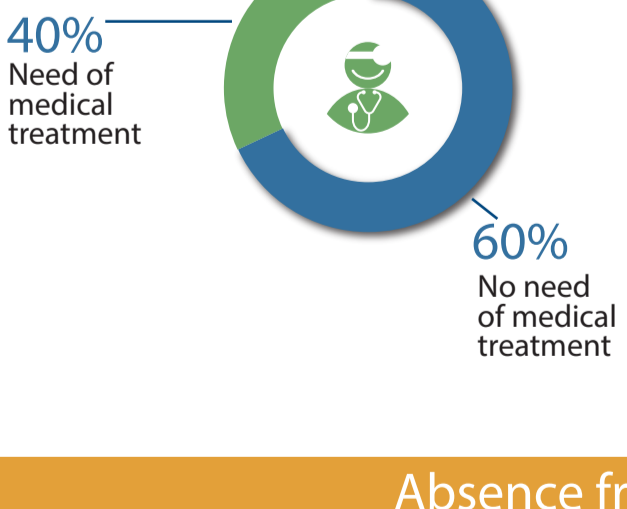
Most common product families notified



Most common product categories notified

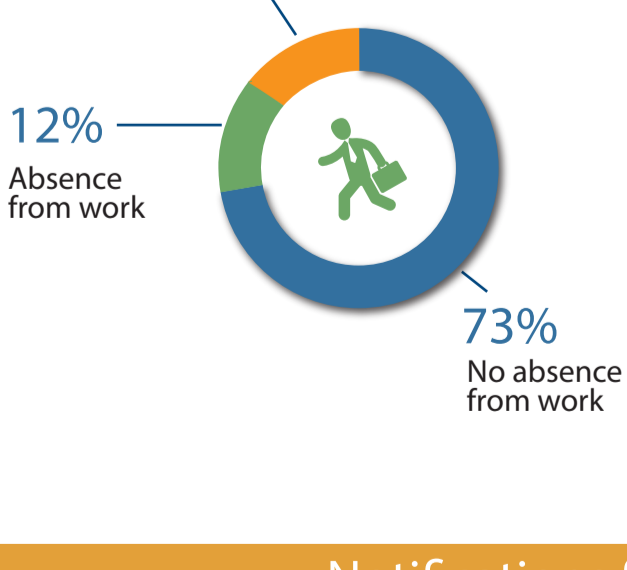


Medical service index



This graphic shows the percentage of notifications that required medical treatment. From the total notifications received in 2015, 40% needed a medical care. This percentage may be associated to the most serious accidents. Most of the notifications received in 2015 were considered of minor severity, not requiring a medical intervention (60%).

Absence from work index



This graphic shows the percentage of injuries related to absence from work. From the total notifications received in 2015, 12% resulted in absence from work.

Notifications from 2006 to 2015

